

## Channel Track Installation Guide:

*Please note: channel track is a difficult hardware to install and we strongly recommend hiring a local professional drapery installer to ensure a perfect outcome!*

### Components:



Ceiling mount bracket side view



Ceiling mount bracket top (left) and bottom (right)



Wall mount bracket



Wall mount bracket base



End Stop



Glide



Splice



Ripplefold Glides

### Installation of Ceiling Mount Channel Track

1 - Determine where the track is going to sit in relation to the window and take into account the finished width of your drapery. Measure 4" to 6" in from each end of the track and mark the placement of the bracket on the ceiling. We recommend placing the brackets 24" to 36" apart across the width of the track. Heavy drapery requires the brackets to be placed closer together.

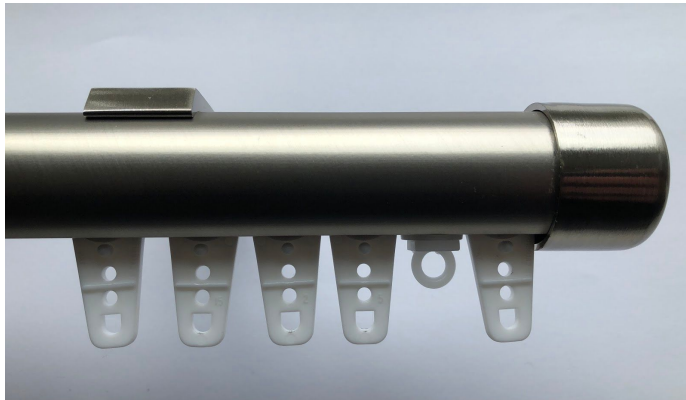
2 - Once the spacing of the brackets has been determined, measure out from the wall 2" for placement of the screw in the back of the bracket (this placement is personal preference but if you have ripplefold drapery the centre of your track it must be more than 2.125" for the drape to clear the wall). Drill a hole for the screw to determine if you require a plug. If so, add your plug and continue the same process for each bracket.

\*\*\*Keep in mind the projection of the trim and the sill, if there is one. The bracket may have to be placed out further to clear these.\*\*\*

3 - Place the brackets into the top channel of the track by loosening the screw on the top of the bracket enough to slide the silver metal piece into the top channel. Slide the required number of brackets onto the track and tighten just enough so the bracket will still move slightly.

4 - Count your drapery hooks or snaps in the case of ripplefold. Slide the same number of glides as hooks or snaps into the bottom channel of track and add the end stops and the end caps to the track. If you have ripplefold drapery you will have received the ripplefold glides on string that will need to be inserted into the track at this time.

Note: a glide or snap is placed on the outer side of the last glide or end stop to anchor the drapery - see photos.



You are now ready to attach the track to the ceiling.

5 - Lifting the track with the brackets on it to the ceiling, screw the screws into the pre-drilled holes/plugs and tighten. This will require 2 people in most cases.

6 - The drapery can now be hung on the track.

## Installation of Wall Mounted Channel Track

1 - Determine where the track is going to sit in relation to the window and take into account the finished width of your drapery. Measure 4" to 6" in from each end of the track and mark the placement of the bracket on the ceiling. We recommend placing the brackets 24" to 36" apart across the width of the track. Heavy drapery requires the brackets to be placed closer together.

2 - Remove the projection post from the rest of the bracket using the allen key provided. Using the base only follow the chart below to calculate height placement of brackets. Mark the screw placement on the wall and predrill holes based on your previous widths marked. Use plugs where necessary to hold the bracket firmly on the wall. Attach the bracket base to the wall and place the base cover over the base. Screw the small metal piece used for the set screw removed from the inside of the post to the front of the bracket base. Be sure it is tightened to the base.

To Clear the floor $\frac{1}{4}$ "	Finished Length + 2.25"
To Kiss the floor	Finished Length + 2"
To break on Floor $\frac{1}{2}$ "	Finished Length + 1.5"

3 - Loosen the screw on the top of the projection post enough to slide the small metal piece in the channel at the top of the track. Slide all the required brackets onto the track and place at the base intervals. The post should be loose enough to move the bracket to the required base placement.

4 - You are now ready to lift the track with the bracket post on the the bracket bases on the wall. Lift the track with the bracket posts on it and place the posts onto the set screw piece and tighten the set screw. Tighten the top screw on the post to hold the track in place. This step will most likely require a second person.

5 - Add the glides and end stops to the bottom channel of the track. Add end caps/ finials to the ends and you are ready to hang the drapery.